

Frenzy Fun Run #22

Turn by Turn Directions

1

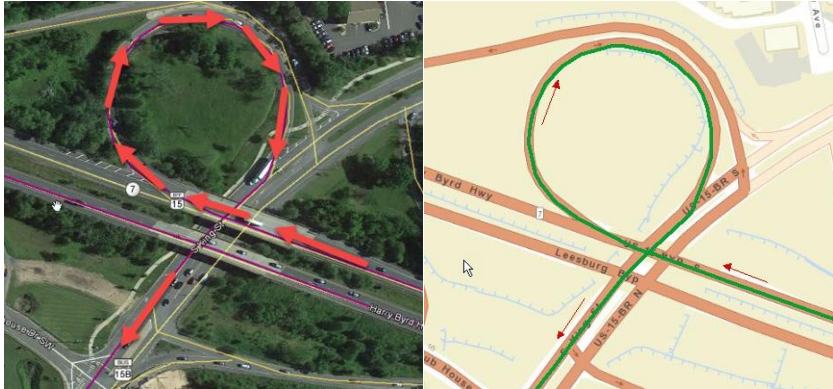
1. From Odds and Ends Detailing...
2. Go southwest on Oakgrove Rd toward Old Ox Rd. **0.2 miles**
3. Turn right on Old Ox Rd. (Rt. 606) and continue west **2.5 miles**

2

1. Take ramp on the right and go on Rt. 267 West (Toll)
2. Continue on Rt. 267 West **10.00 miles**

3

1. Move to far left lane to take left exit ramp on to Rt.15 / Rt.7 Leesburg bypass West.
2. Stay in right lane and continue West on Rt.15/Rt.7 bypass for **.5 miles**.
3. Stay right at the bridge over Rt.15 and move right to take the looping Rt. 15 South exit (aka: S King St.).



4. Continue south for **5.8 miles**. Note: S. King St. becomes Rt. 15, aka: James Monroe Hwy

4

1. Turn right on Lime Kiln Rd. and continue for **5.5 miles**

5

1. Bear left on to State Hwy 734 (aka Snickersville Tpke) and continue for **4.8 miles**

6

1. Make a sharp right on to Rt. 50 (aka John S Mosby Hwy) and continue for **8.6 miles**.

7

1. Turn left on to Atoka Rd. (713), **then another quick left** to remain on Atoka Rd. Then continue for **5 miles**

*** Turn sheet over to see map insert detail of this intersection***



8

1. Turn right on to Rectortown Rd. (710) and continue for **4.2 miles**

9

2. At stop sign bear right on Delaplane Grade Rd. (712) and continue for **2.63 miles**

10 The Regroup & Photos Stop

1. Turn right on Rt. 50 (John Mosby Hwy) and go **0.14 miles**, then turn right into church parking lot.
2. Departing...we will head west on Rt. 50 for **4.7 miles**

11 Right turn possibly obscured by brush/tall grass

1. Turn right off Rt. 50 onto an old section of original John Mosby Hwy. Then right on to Blue Ridge Mountain Road (601) and go for **10.75 miles**.

12

1. Turn right on Rt. 7 Harry Byrd Hwy. and go for **17.8 miles**.

13

1. After passing the Rt. 15 interchange, stay right to merge on to the Greenway Toll Rd. (267). Continue for **10.7 miles**.

14

1. Take the 606 (Old Ox Road) - **East** exit and drive about **2.2 miles**.

15

From this point (**if you haven't already put the hotel address into Google Maps or Waze**) there are two options for returning to the Holiday Inn.

- a. Continue about **0.3 miles** on Old Ox Road and turn left at (636) Shaw Road. Continue .95 miles north on Shaw Road, then turn left on Holiday Drive.
- b. Take the Rt. 28 north exit ramp and stay to the right for .6 miles, then take the East 846 (Sterling Blvd) exit. Stay right to turn right on (636) Shaw Road, then right on Holiday Drive.